



DORSET SPEARFISHING CLUB

Ringstead National 2024

Date: Saturday 08th June 2024/ backup date of Saturday 22nd June 2024

Location: Ringstead bay (DT28NG) sign on and weigh in at Gully cottage

Timings:

Sign on and register (sign on at Gully cottage, past the café and down the road to the left. See photos at the end of this document):

0900 - 0945

Safety brief: 0945

Competition starts: 1000

Competition ends: 1600

Pasty and chips delivered by Ringstead café 1630

Fish weigh in: 1700 (or once all competitors have signed back in, in the case of a missing competitor)

Cost: Adult- £30.00 per competitor (pasty and chips included in price) Junior- Free (pasty and chips included)

Parking: Free parking is available at Gully cottage for approximately 20 cars on a first come first basis. Gully cottage is located down the road past the café, at the large green doors. Once the parking area is full, further parking is available at Ringstead café for £6.00 per car.

Food: Pasty and chips will be supplied to all competitors on completion of the competition. Supplied by the Ringstead cafe. (If you have any dietary requirements or are a vegetarian please contact the Dorset spearfishing club prior to the event.)

Species: A maximum of 10 fish per species per competitor (excluding Bass, Wrasse, Ray, Dog fish and Bull huss- see further rules for clarification)

Lesser Spotted Dogfish and Bull Huss will be limited to 2 per competitor (2 in total combining species)

Rays will be limited to 2 per competitor (2 in total combining species)

Wrasse will be limited to 2 per competitor at 40cm each.

Bass will be limited to 2 per competitor capped at 3000 points per fish

The following species of fish are **NOT PERMITTED** in this competition:

Weaver fish, Electric Ray, Sting Ray, Lump-sucker, Silver eel, Conger eel, Salmon, Sea Trout, Sunfish, Sharks (not including Dog fish or Bull huss), Shad and Bluefin Tuna.

Minimum sizes:

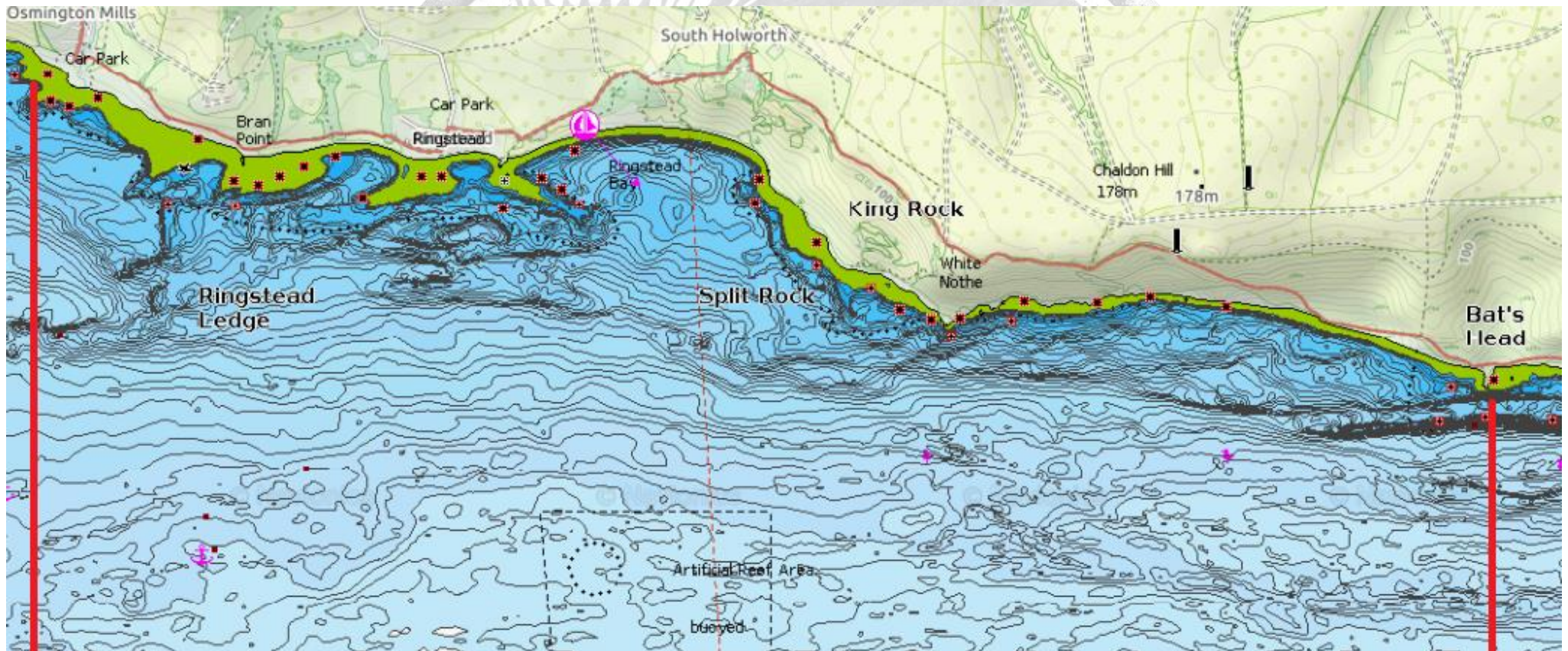
280 mm.	320 mm.	360 mm.	380 mm.	400 mm.	420 mm.	450 mm.
BlackBream Gurnard Mackerel Pout Red Mullet Scad	Flounder	Brill Plaice Pollack Sole Trigger Fish Turbot John Dory	Gold spot mullet	Cod Wrasse	Grey Mullet family	Garfish Skate and Ray (across the wings) Bass Bull Huss Dog fish

DORSET SPEARFISHING CLUB

Boundaries:

East boundary – In line with Bats head (50° 37.338'N 2° 17.463'W)

West boundary– In line with Osmington car park (50° 38.048'N 2° 22.573'W)



Rules:

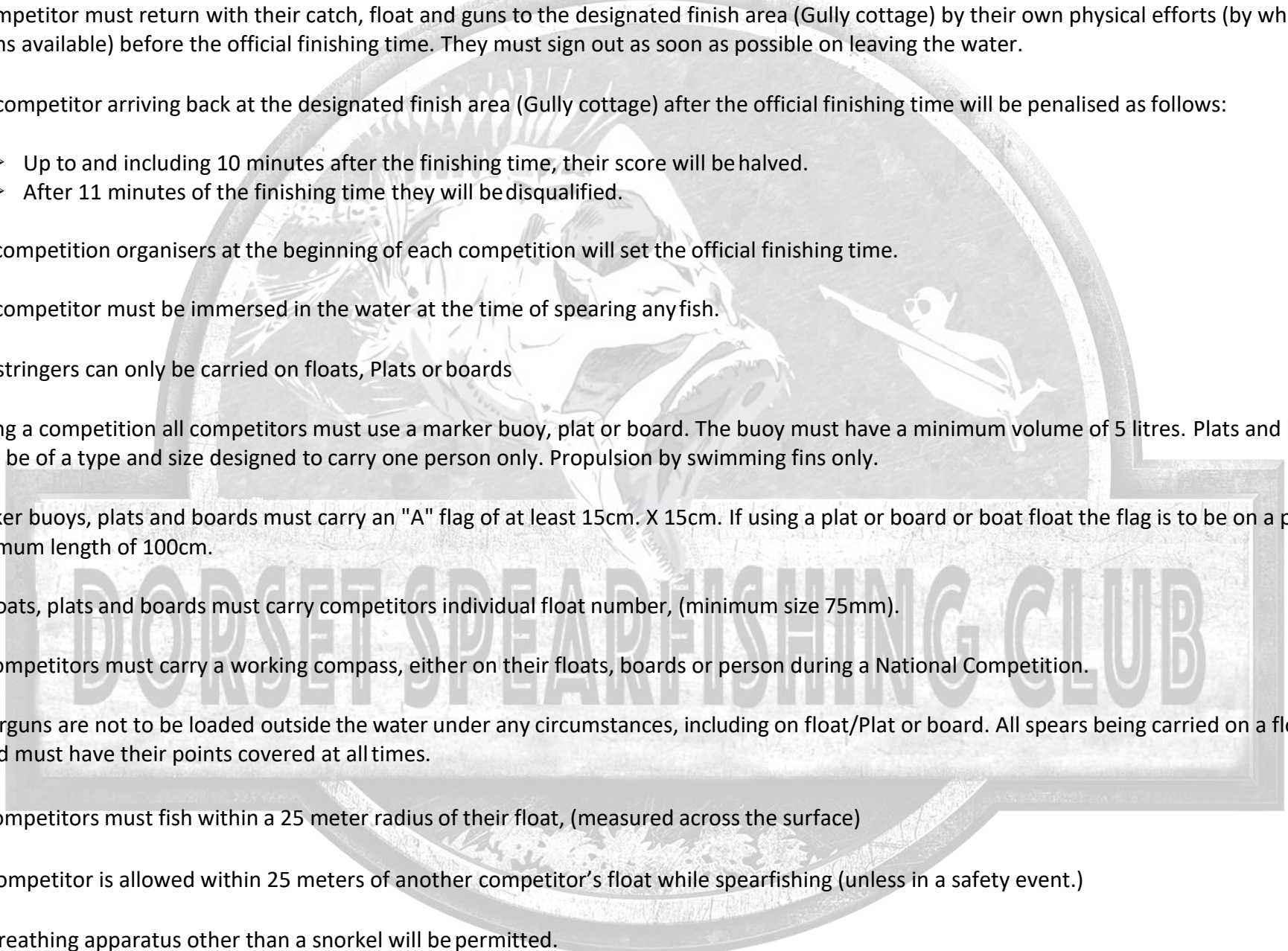
Sign on: sign on for the competition will be on the day off the event between 0900- 0945 Held at gully cottage (DT28NG).

Before the competition:

- No competitor shall be permitted to fish or take a gun in the water while in the designated catch area, up to and including, 5 days prior to a competition. Any competitor found or proved to have been in contravention of this clause will not be eligible to compete in that competition.
- No competitor shall be permitted to swim or scout in the designated catch area thirty hours prior to the start of a competition, any competitor found or proved to be in contravention of this clause will not be eligible to compete in that competition.
- Any competitor found or proved to be placing markers within the designated catch area designed to give assistance to that or another competitor will be disqualified from that competition. An incident of this nature will also render the competitors' liable to investigation by the B.S.A. and the appropriate sanctions will be imposed.

During the competition

- Spear tips to be covered at all times while out of the water.
- Electronic equipment may be used in all competition organised by the BSA.
- All competitors must start at the designated start area (Gully cottage) with full spearfishing equipment.
- Competitors may make for their selected site by walking, running, or swimming immediately after the start of the competition.
- No competitor will be allowed to start the competition from a boat, or have the use of a boat.
- Anyone fishing outside of the designated catch area during a competition will be disqualified from that competition and from the **ensuing two competitions.**

- 
- A competitor must return with their catch, float and guns to the designated finish area (Gully cottage) by their own physical efforts (by whatever means available) before the official finishing time. They must sign out as soon as possible on leaving the water.
 - Any competitor arriving back at the designated finish area (Gully cottage) after the official finishing time will be penalised as follows:
 - Up to and including 10 minutes after the finishing time, their score will be halved.
 - After 11 minutes of the finishing time they will be disqualified.
 - The competition organisers at the beginning of each competition will set the official finishing time.
 - The competitor must be immersed in the water at the time of spearing any fish.
 - Fish stringers can only be carried on floats, Plats or boards
 - During a competition all competitors must use a marker buoy, plat or board. The buoy must have a minimum volume of 5 litres. Plats and boards must be of a type and size designed to carry one person only. Propulsion by swimming fins only.
 - Marker buoys, plats and boards must carry an "A" flag of at least 15cm. X 15cm. If using a plat or board or boat float the flag is to be on a pole with a minimum length of 100cm.
 - All floats, plats and boards must carry competitors individual float number, (minimum size 75mm).
 - All competitors must carry a working compass, either on their floats, boards or person during a National Competition.
 - Spearguns are not to be loaded outside the water under any circumstances, including on float/Plat or board. All spears being carried on a float or board must have their points covered at all times.
 - All competitors must fish within a 25 meter radius of their float, (measured across the surface)
 - No competitor is allowed within 25 meters of another competitor's float while spearfishing (unless in a safety event.)
 - No breathing apparatus other than a snorkel will be permitted.

- A competitor may come ashore as often as they wish but they will not be permitted to use any means of transport to return to the designated start area (Gully cottage).
- A competitor who aids another competitor in catching a fish in any way will be entitled to 50% of the points for that fish.
- No lures of any description are permitted to attract fish.
- Any competitor helping another competitor in the case of injury or exhaustion will be entitled to 50% of the total point's value of the others' catch at that time.
- The passing of fish between competitors will result in the disqualification of the competitors involved. An incident of this nature will also render the competitors' liable to investigation by the B.S.A. and the appropriate sanctions will be imposed.
- If during the competition the organisers decide to call time early, due to extreme bad weather and 75% of the competition time has passed then the competition will still be valid.
- Competitors are responsible for their fish until they have accepted the official decision of the records officer or adjudicating committee.
- Any competitor who is transported by any boat after the start of a competition will be disqualified. A cover boatman can insist on moving a competitor on safety grounds without the competitor being penalised, the reason for the movement must be reported to the competition organisers.



DORSET SPEARFISHING CLUB

Protests:

- Any competitor wishing to lodge a complaint must notify the Competition Organisers in writing prior to the prize giving event for that competition.
- Upon receipt of protest the Competition Organisers must call for an Adjudicator Committee (Main BSA Committee).

Points allocation for fish:

- Round fish 1000 points per fish PLUS 1 point per gram (no maximum).
- Bottom fish/Sharks/Rays 500 points per fish PLUS 0.5 points per gram Dogfish & Flounders (up to a maximum of 2500 total).
- Flat fish 1000 points per fish PLUS 1 point per gram except Flounders (see point above).
- Wrasse 1000 points per fish PLUS 1 point per gram.
- Triggerfish 1000 points per fish PLUS 1 point per gram.
- Bass 3000 points per fish, maximum of two bass per competitor.

Bonus points:

A competitor is entitled to bonus points in the following order:

- 2 weighing species 1000 points bonus.
- 3 weighing species 2000 points bonus
- 4 weighing species 3000 points bonus and so on.

Sign on and weigh in location: when you reach Ringstead carpark mention to the parking attendant you are there for Gully cottage. Gully cottage is located past the Ringstead café and down the road to the left. The parking area is located behind the large green gate.

